

## \$415,000 - 11719 158 Avenue, Edmonton

MLS® #E4433968

**\$415,000**

5 Bedroom, 2.50 Bathroom, 1,140 sqft

Single Family on 0.00 Acres

Dunluce, Edmonton, AB

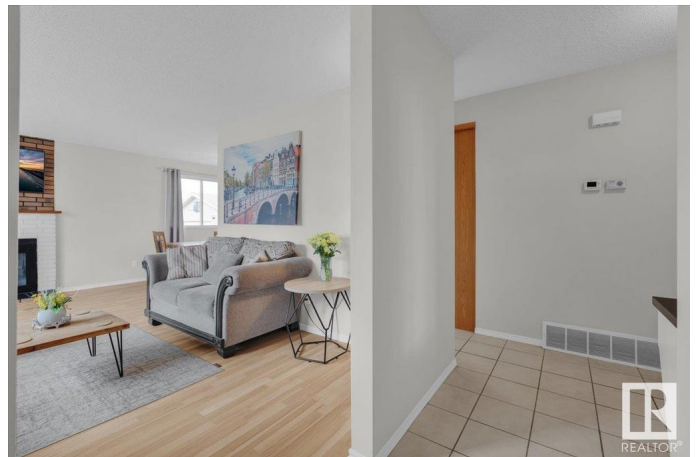
Well maintained bungalow w/ a double attached garage on a 6600+SQFT Lot! Welcome to Dunluce, a quiet, family friendly community w/ a rec centre, public transportation, schools & MORE! Youâ€™ll love all the natural light from the large windows all along the front of the home. The living room has a wood burning fireplace, and opens up to the dinning room. Perfect for entertaining. The kitchen has some newer appliances, granite countertops, and no shortage of cabinetry! Upstairs has 3 bedrooms total, & a 4pc bathroom w/ a new tub surround. The large primary room has a 2pc ensuite. The basement is fully finished w/ a large rec room, 2 bedrooms (one w/ a 3pc ensuite) & loads of storage space! Other upgrades include: New 50 year shingles, newer HWT, freshly painted, heated/ insulated double garage & MORE! Outside youâ€™ll find your massive sunny SOUTH FACING backyard w/ a garden, shed & fruit trees! Includes basement wall shelving, TV mounts, & curtain rods. For more details please visit the REALTORâ€™s Website.

Built in 1976

### Essential Information

MLS® # E4433968

Price \$415,000



Bedrooms	5
Bathrooms	2.50
Full Baths	2
Half Baths	1
Square Footage	1,140
Acres	0.00
Year Built	1976
Type	Single Family
Sub-Type	Detached Single Family
Style	Bungalow
Status	Active

### Community Information

Address	11719 158 Avenue
Area	Edmonton
Subdivision	Dunluce
City	Edmonton
County	ALBERTA
Province	AB
Postal Code	T5X 2K3

### Amenities

Amenities	See Remarks
Parking Spaces	4
Parking	Double Garage Attached, Heated, Insulated

### Interior

Interior Features	ensuite bathroom
Appliances	Dishwasher-Built-In, Dryer, Garage Control, Garage Opener, Microwave Hood Fan, Refrigerator, Stove-Electric, Washer, See Remarks
Heating	Forced Air-1, Natural Gas
Stories	2
Has Basement	Yes
Basement	Full, Finished

### Exterior

Exterior	Wood, See Remarks
Exterior Features	Fenced, Fruit Trees/Shrubs, Landscaped, Public Transportation, Schools, Shopping Nearby

Roof	Asphalt Shingles
Construction	Wood, See Remarks
Foundation	Concrete Perimeter

### **School Information**

Elementary	Dunluce/St. Lucy
Middle	Rosslyn/Sir John
High	Queen Eliz./Arch. O'Leary

### **Additional Information**

Date Listed	May 2nd, 2025
Days on Market	4
Zoning	Zone 27

DATA IS DEEMED RELIABLE BUT IS NOT GUARANTEED ACCURATE BY THE REALTORS® ASSOCIATION OF EDMONTON. COPYRIGHT 2025 BY THE REALTORS® ASSOCIATION OF EDMONTON. ALL RIGHTS RESERVED. Trademarks are owned or controlled by the Canadian Real Estate Association (CREA) and identify real estate professionals who are members of CREA (REALTOR®, REALTORS®) and/or the quality of services they provide (MLS®, Multiple Listing Service®)

Listing information last updated on May 6th, 2025 at 9:02pm MDT