

## \$103,900 - 57502 Rr 85, Rural St. Paul County

MLS® #E4433654

**\$103,900**

0 Bedroom, 0.00 Bathroom,  
Rural on 7.24 Acres

None, Rural St. Paul County, AB

**Ideal Building Site Just Minutes from Town!**

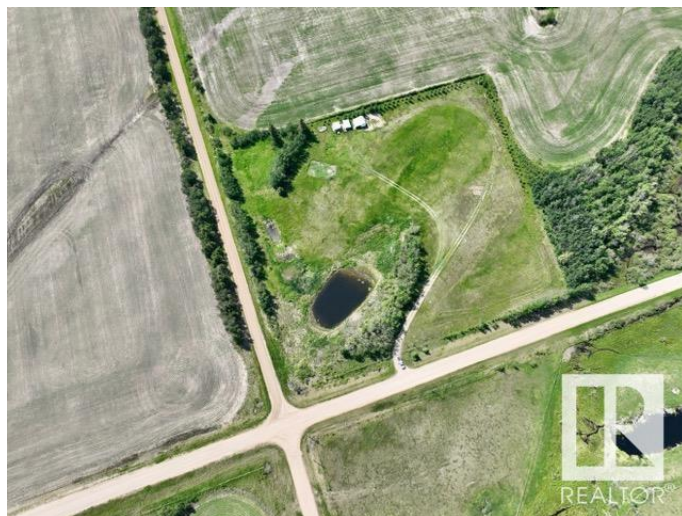
This 7.24-acre property offers the perfect blend of function and charm. Tree-lined for natural wind protection and privacy, the land is fenced and ready for your vision - whether it's a hobby farm with a barn and animals, a home with your dream shop or just a simple peaceful country retreat. A scenic dugout adds character and practical water use, while a lean-to shed is already in place for immediate storage or shelter. With power on site and under 10 minutes from St. Paul, this is a rare opportunity to enjoy the tranquility of rural living without sacrificing convenience. Build your dream home and start your next chapter in the heart of the countryside!

### Essential Information

MLS® #	E4433654
Price	\$103,900
Bathrooms	0.00
Acres	7.24
Type	Rural
Sub-Type	Vacant Lot/Land
Status	Active

### Community Information

Address 57502 Rr 85



Area	Rural St. Paul County
Subdivision	None
City	Rural St. Paul County
County	ALBERTA
Province	AB
Postal Code	T0A 3A0

## Exterior

Exterior Features   Corner Lot, Fenced, Level Land

## Additional Information

Date Listed	April 30th, 2025
Days on Market	98
Zoning	Zone 60

DATA IS DEEMED RELIABLE BUT IS NOT GUARANTEED ACCURATE BY THE REALTORS® ASSOCIATION OF EDMONTON. COPYRIGHT 2025 BY THE REALTORS® ASSOCIATION OF EDMONTON. ALL RIGHTS RESERVED. Trademarks are owned or controlled by the Canadian Real Estate Association (CREA) and identify real estate professionals who are members of CREA (REALTOR®, REALTORS®) and/or the quality of services they provide (MLS®, Multiple Listing Service®)

Listing information last updated on August 6th, 2025 at 12:17am MDT