

## \$638,000 - 8645 Sloane Court, Edmonton

MLS® #E4433466

**\$638,000**

1 Bedroom, 3.50 Bathroom, 2,203 sqft

Single Family on 0.00 Acres

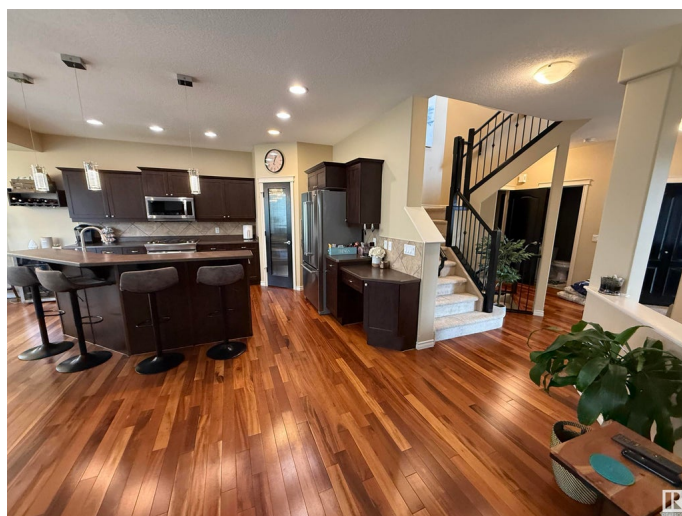
South Terwillegar, Edmonton, AB

**STUNNING SOUTH TERWILLEGAR 2 STOREY 4 BEDROOM HOME! GORGEOUS** inside and out, this one greets you with a TON of natural light and gleaming hardwood flooring. Other features of this meticulously kept thome include such things as a wonderful open concept, a den/flex space & a cozy living rm w/a gas fireplace, a stunning kitchen featuring a gas stove and stainless steel appliances, a walkthru pantry & breakfast bar! The bright dining nook is the perfect spot for your morning coffee & to enjoy the views of your sunny south backing yard. The upper level has a comfy bonus rm for family movie nights, 3 generous size bedrms & a 4pce bath. The master suite is fit for a KING and QUEEN w/his & her WI closets & a 5pce ensuite with his & her sinks & beautiful tub! The lower level has a rec rm, office, 3pce bath & 4th bedrm. Close to all amenities, schools, & walking trails. You'll be sure to add this one to your short list!

Built in 2007

### Essential Information

MLS® #	E4433466
Price	\$638,000
Bedrooms	1
Bathrooms	3.50



Full Baths	3
Half Baths	1
Square Footage	2,203
Acres	0.00
Year Built	2007
Type	Single Family
Sub-Type	Detached Single Family
Style	2 Storey
Status	Active

### Community Information

Address	8645 Sloane Court
Area	Edmonton
Subdivision	South Terwillegar
City	Edmonton
County	ALBERTA
Province	AB
Postal Code	T6K 0K9

### Amenities

Amenities	Air Conditioner, Deck, No Smoking Home
Parking Spaces	4
Parking	Double Garage Attached

### Interior

Interior Features	ensuite bathroom
Appliances	Air Conditioning-Central, Dishwasher-Built-In, Dryer, Garage Opener, Microwave Hood Fan, Stove-Electric, Washer, Window Coverings
Heating	Forced Air-1, Natural Gas
Fireplace	Yes
Fireplaces	Mantel, Tile Surround
Stories	3
Has Basement	Yes
Basement	Full, Finished

### Exterior

Exterior	Wood, Brick, Vinyl
Exterior Features	Cul-De-Sac, Fenced, Golf Nearby, No Back Lane, No Through Road, Playground Nearby, Schools, Shopping Nearby

Roof	Asphalt Shingles
Construction	Wood, Brick, Vinyl
Foundation	Concrete Perimeter

**Additional Information**

Date Listed	April 30th, 2025
Days on Market	1
Zoning	Zone 14

DATA IS DEEMED RELIABLE BUT IS NOT GUARANTEED ACCURATE BY THE REALTORS® ASSOCIATION OF EDMONTON. COPYRIGHT 2025 BY THE REALTORS® ASSOCIATION OF EDMONTON. ALL RIGHTS RESERVED.Trademarks are owned or controlled by the Canadian Real Estate Association (CREA) and identify real estate professionals who are members of CREA (REALTOR®, REALTORS®) and/or the quality of services they provide (MLS®, Multiple Listing Service®)

Listing information last updated on May 1st, 2025 at 1:17pm MDT