

Courtesy Of Shauna Allen Of Royal LePage Benchmark

## \$230,000 - 53424 Rge Road 60, Rural Parkland County

MLS® #E4433347

**\$230,000**

5 Bedroom, 1.00 Bathroom, 934 sqft

Rural on 0.21 Acres

Lake Isle (Frys), Rural Parkland County, AB

Spend your summer enjoying lake time!! At this hidden gem on Fry's a property full of charm, tranquility & endless potential. Perched perfectly to capture breathtaking views of Lake Isle, you'll fall in love with the stunning sunsets from your spacious top deck. Whether it's summer or winter, there's something for everyone here. Spend your summers enjoying watersports, hosting cozy campfires, and making memories with friends and family. In the winter, take advantage of snowmobiling, ice fishing, skating, or simply relaxing in your peaceful cabin getaway. Just 40mins west of Spruce Grove, this 934sqft. 3-season cabin offers a warm, rustic feel with a full kitchen, wood-burning stove, 4 comfortably sized bedrooms, and a 3-piece bath. Need extra space? A charming guest bunkhouse provides even more room for visitors. The large private firepit area nestled between the two buildings is perfect for evenings under the stars, and there's ample space for parking & entertaining.

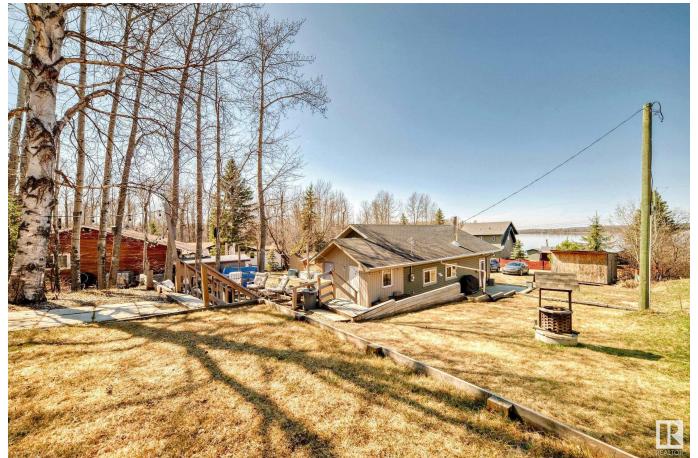
Built in 2010

### Essential Information

MLS® # E4433347

Price \$230,000

Bedrooms 5



|                |                        |
|----------------|------------------------|
| Bathrooms      | 1.00                   |
| Full Baths     | 1                      |
| Square Footage | 934                    |
| Acres          | 0.21                   |
| Year Built     | 2010                   |
| Type           | Rural                  |
| Sub-Type       | Detached Single Family |
| Style          | Bungalow               |
| Status         | Active                 |

### **Community Information**

|             |                       |
|-------------|-----------------------|
| Address     | 53424 Rge Road 60     |
| Area        | Rural Parkland County |
| Subdivision | Lake Isle (Frys)      |
| City        | Rural Parkland County |
| County      | ALBERTA               |
| Province    | AB                    |
| Postal Code | T0E 0W0               |

### **Amenities**

|                |  |
|----------------|--|
| Features       | Ceiling 10 ft., Deck, Fire Pit, Guest Suite, Hot Water Electric, Lake Privileges, No Smoking Home, See Remarks |
| Parking Spaces | 6  |

### **Interior**

|              |                           |
|--------------|---------------------------|
| Heating      | Forced Air-1, Natural Gas |
| Stories      | 1                         |
| Has Basement | Yes                       |
| Basement     | None, No Basement         |

### **Exterior**

|                   |  |
|-------------------|--|
| Exterior          | Wood   |
| Exterior Features | Backs Onto Park/Trees, Beach Access, Boating, Lake View, Low Maintenance Landscape, No Back Lane, Recreation Use, Sloping Lot, See Remarks |
| Construction      | Wood   |
| Foundation        | Concrete Perimeter   |

### **Additional Information**

|             |                  |
|-------------|------------------|
| Date Listed | April 29th, 2025 |
|-------------|------------------|

Days on Market 48

Zoning Zone 75

DATA IS DEEMED RELIABLE BUT IS NOT GUARANTEED ACCURATE BY THE REALTORS® ASSOCIATION OF EDMONTON. COPYRIGHT 2025 BY THE REALTORS® ASSOCIATION OF EDMONTON. ALL RIGHTS RESERVED. Trademarks are owned or controlled by the Canadian Real Estate Association (CREA) and identify real estate professionals who are members of CREA (REALTOR®, REALTORS®) and/or the quality of services they provide (MLS®, Multiple Listing Service®)

Listing information last updated on June 16th, 2025 at 6:17am MDT