

# \$174,900 - 303 10003 87 Avenue, Edmonton

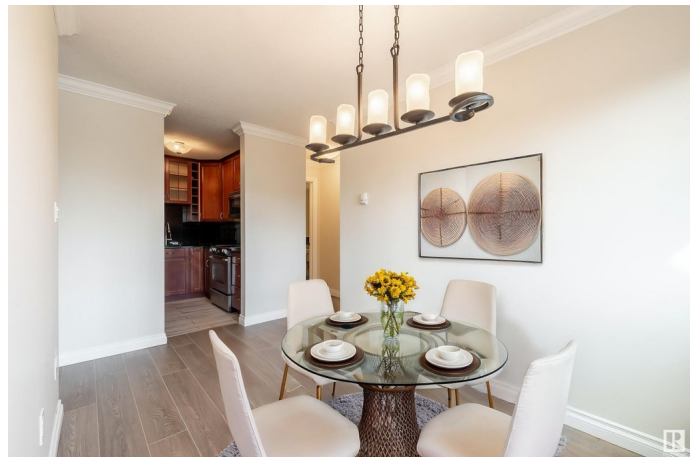
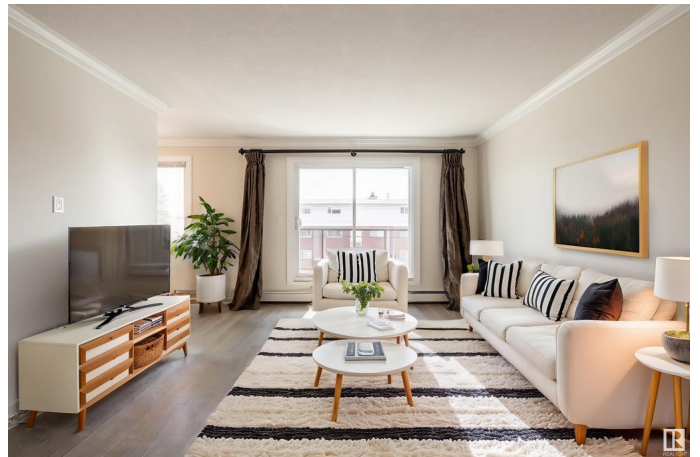
MLS® #E4433050

**\$174,900**

1 Bedroom, 1.00 Bathroom, 680 sqft  
Condo / Townhouse on 0.00 Acres

Strathcona, Edmonton, AB

**GREAT INVESTMENT OPPORTUNITY!  
PRIME LOCATION!** Welcome to Strathcona—one of Edmonton’s most vibrant communities. This beautifully updated 1 Bed, 1 Bath upper-level condo is move-in ready with brand new vinyl plank flooring, fresh paint, granite counters, elegant crown moulding, and a knock-down ceiling with sound-reducing insulation. The bright, open-concept layout features a functional kitchen with stainless steel appliances, in-suite laundry, and a large balcony—perfect for relaxing or entertaining. The spacious primary bedroom and large windows bring in plenty of natural light. Located just a few blocks from Whyte Avenue, you're close to local eateries, trendy shops, nightlife, and theatre. Minutes to downtown, the river valley, Mill Creek Ravine, schools, and public transit. Whether you're a first-time buyer, downsizer, or investor, this is an amazing opportunity in an unbeatable location. **SOME PHOTOS ARE VIRTUALLY STAGED.**



Built in 1981

## Essential Information

MLS® #	E4433050
Price	\$174,900
Bedrooms	1

Bathrooms	1.00
Full Baths	1
Square Footage	680
Acres	0.00
Year Built	1981
Type	Condo / Townhouse
Sub-Type	Lowrise Apartment
Style	Single Level Apartment
Status	Active

### **Community Information**

Address	303 10003 87 Avenue
Area	Edmonton
Subdivision	Strathcona
City	Edmonton
County	ALBERTA
Province	AB
Postal Code	T6E 2P1

### **Amenities**

Amenities	On Street Parking, Intercom, See Remarks
Parking Spaces	1
Parking	Stall

### **Interior**

Appliances	Dishwasher-Built-In, Microwave Hood Fan, Refrigerator, Stacked Washer/Dryer, Stove-Electric
Heating	Baseboard, Water
# of Stories	4
Stories	1
Has Basement	Yes
Basement	None, No Basement

### **Exterior**

Exterior	Wood, Brick, Stucco
Exterior Features	Back Lane, Playground Nearby, Public Transportation, Schools, Shopping Nearby, See Remarks
Roof	Tar & Gravel
Construction	Wood, Brick, Stucco

Foundation Concrete Perimeter

### **School Information**

Elementary King Edward School

Middle Allendale School

High Strathcona School

### **Additional Information**

Date Listed April 26th, 2025

Days on Market 5

Zoning Zone 15

Condo Fee \$435

DATA IS DEEMED RELIABLE BUT IS NOT GUARANTEED ACCURATE BY THE REALTORS® ASSOCIATION OF EDMONTON. COPYRIGHT 2025 BY THE REALTORS® ASSOCIATION OF EDMONTON. ALL RIGHTS RESERVED. Trademarks are owned or controlled by the Canadian Real Estate Association (CREA) and identify real estate professionals who are members of CREA (REALTOR®, REALTORS®) and/or the quality of services they provide (MLS®, Multiple Listing Service®)

Listing information last updated on April 30th, 2025 at 11:32pm MDT