

\$534,900 - 563038 Range Road 192, Rural Lamont County

MLS® #E4432991

\$534,900

4 Bedroom, 2.50 Bathroom, 1,650 sqft

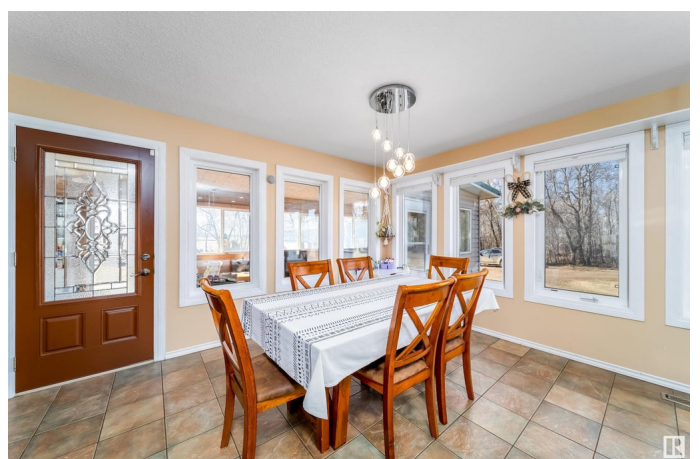
Rural on 13.44 Acres

None, Rural Lamont County, AB

Welcome to peaceful country living on just over 13 Acres! Charming 1.5 Storey family home that has been well maintained with many upgrades! Large COUNTRY KITCHEN with Loads of natural light, UPGRADED CUPBOARDS AND GRANITE COUNTERSTOPS! Lots of Cupboard space, LARGE ISLAND with GAS COOKTOP! Generous space for large kitchen table! Massive Family Room with WOOD BURNING FIREPLACE, WOOD VAULTED CEILINGS, SKYLIGHTS. All UPDATED WINDOWS and DOORS! Main floor has ceramic tile and hardwood floors. Main floor laundry room, 4 pce main bath, Primary bedroom on main floor with 2 closets. Upstairs is 2 bedrooms with Jack and Jill 4 pce bath. Downstairs Office/Bedroom, 2 pce bath Large Rec Room with Gas Fireplace and Flex Room. NEW FURNACE! You'll enjoy the 3 Season Room with your own HOT TUB! Detached OVERSIZED HEATED, INSULATED 3 Car Garage. 42x71 Quonset with 220 Wiring. Some out building along with a fenced pen for Animals. Only 2 miles from Major Highway to Fort Mac, Lamont is 8 Miles South.

Built in 1986

Essential Information



| | |
|----------------|------------------------|
| MLS® # | E4432991 |
| Price | \$534,900 |
| Bedrooms | 4 |
| Bathrooms | 2.50 |
| Full Baths | 2 |
| Half Baths | 1 |
| Square Footage | 1,650 |
| Acres | 13.44 |
| Year Built | 1986 |
| Type | Rural |
| Sub-Type | Detached Single Family |
| Style | 1 and Half Storey |
| Status | Active |

Community Information

| | |
|-------------|-----------------------|
| Address | 563038 Range Road 192 |
| Area | Rural Lamont County |
| Subdivision | None |
| City | Rural Lamont County |
| County | ALBERTA |
| Province | AB |
| Postal Code | T0B 2R0 |

Amenities

| | |
|----------|---|
| Features | Air Conditioner, Deck, No Smoking Home, R.V. Storage, Sunroom |
|----------|---|

Interior

| | |
|--------------|---------------------------|
| Heating | Forced Air-1, Natural Gas |
| Fireplace | Yes |
| Stories | 2 |
| Has Basement | Yes |
| Basement | Full, Partially Finished |

Exterior

| | |
|-------------------|---|
| Exterior | Wood |
| Exterior Features | Flat Site, Fruit Trees/Shrubs, Vegetable Garden |
| Construction | Wood |
| Foundation | Concrete Perimeter |

Additional Information

Date Listed April 26th, 2025

Days on Market 5

Zoning Zone 60

DATA IS DEEMED RELIABLE BUT IS NOT GUARANTEED ACCURATE BY THE REALTORS® ASSOCIATION OF EDMONTON. COPYRIGHT 2025 BY THE REALTORS® ASSOCIATION OF EDMONTON. ALL RIGHTS RESERVED. Trademarks are owned or controlled by the Canadian Real Estate Association (CREA) and identify real estate professionals who are members of CREA (REALTOR®, REALTORS®) and/or the quality of services they provide (MLS®, Multiple Listing Service®)

Listing information last updated on May 1st, 2025 at 6:47pm MDT