

## \$254,900 - 358 Smith Cresent, Rural Parkland County

MLS® #E4432776

**\$254,900**

1 Bedroom, 1.00 Bathroom, 648 sqft

Rural on 0.14 Acres

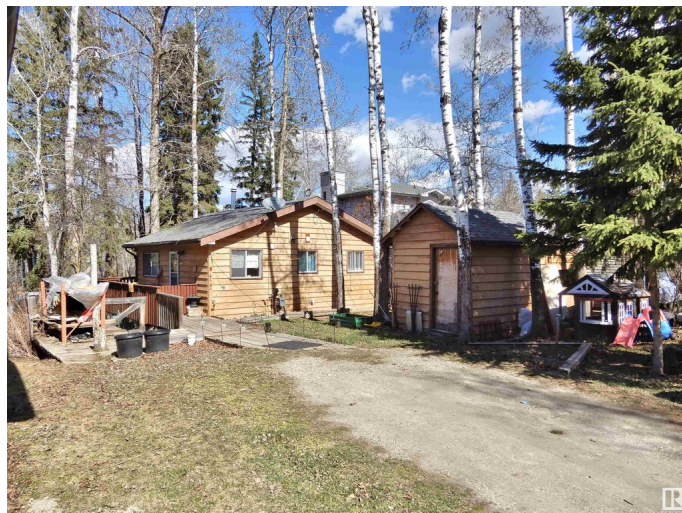
Spring Lake, Rural Parkland County, AB

Quiet country living. Do yourself a favor and come view this quaint 640 sq. ft. 1 bedroom, 1 bath home a few minutes West of Stony Plain in Spring Lake. Whether you want this affordable home for full time living or a weekend retreat, you wont be disappointed. This very private property offers a galley type kitchen that is open to a large living room with vaulted ceilings and a cozy wood burning fireplace. The whole property, with over 500 sq. ft. of decking, overlooks it's own private forest and backs onto a greenbelt where you will never have any neighbors. A short walk out your back gate will bring you to Spring lake. Bring your kayak or canoe and enjoy the fishing in the summer and cross country skiing and snowmobiling in the winter.. There is so much more to discover here. Come see for yourself.

Built in 1981

### Essential Information

MLS® #	E4432776
Price	\$254,900
Bedrooms	1
Bathrooms	1.00
Full Baths	1
Square Footage	648
Acres	0.14



Year Built	1981
Type	Rural
Sub-Type	Detached Single Family
Style	Bungalow
Status	Active

### Community Information

Address	358 Smith Cresent
Area	Rural Parkland County
Subdivision	Spring Lake
City	Rural Parkland County
County	ALBERTA
Province	AB
Postal Code	T7Z 2S9

### Amenities

Features	Crawl Space, Deck, Fire Pit, Lake Privileges
----------	--

### Interior

Heating	Forced Air-1, Natural Gas
Fireplace	Yes
Stories	1
Has Basement	Yes
Basement	None, No Basement

### Exterior

Exterior	Wood
Exterior Features	Backs Onto Lake, Backs Onto Park/Trees, Beach Access, Boating, Environmental Reserve, Lake Access Property, Private Fishing, Private Setting, Recreation Use
Construction	Wood
Foundation	Piling

### Additional Information

Date Listed	April 25th, 2025
Days on Market	6
Zoning	Zone 94

DATA IS DEEMED RELIABLE BUT IS NOT GUARANTEED ACCURATE BY THE REALTORS® ASSOCIATION OF EDMONTON. COPYRIGHT 2025 BY THE REALTORS® ASSOCIATION OF EDMONTON. ALL RIGHTS RESERVED. Trademarks are owned or controlled by the Canadian Real Estate Association (CREA) and identify real

estate professionals who are members of CREA (REALTOR®®, REALTORS®®) and/or the quality of services they provide (MLS®®, Multiple Listing Service®®)

Listing information last updated on May 1st, 2025 at 4:32pm MDT