

\$369,900 - 22 16231 19 Avenue, Edmonton

MLS® #E4431989

\$369,900

3 Bedroom, 2.50 Bathroom, 1,246 sqft
Condo / Townhouse on 0.00 Acres

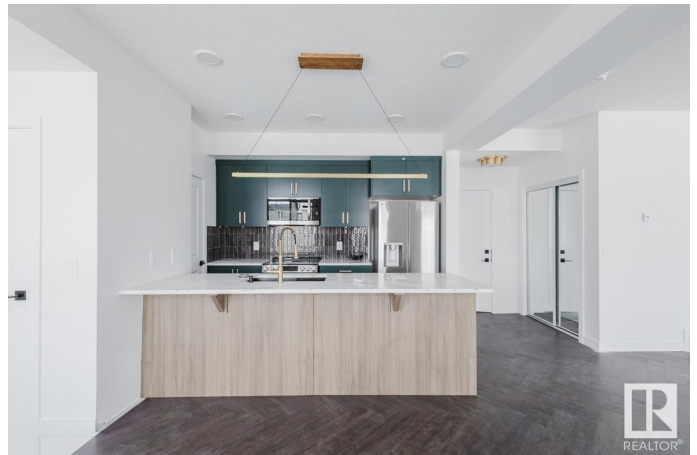
Glenridding Ravine, Edmonton, AB

Welcome to Essential Glenridding, where luxury living meets modern convenience! This stunning new 3-story condo features new designer finishes that will take your breath away. On the lower level, you'll find a convenient double attached garage. As you make your way upstairs, you'll be greeted by the open-concept main floor that offers a half bath, a walk-in pantry, and a private balcony perfect for hosting summer BBQs or relaxing after a long day. The kitchen features quartz countertops, waterline to fridge and upgraded cabinets. It's the perfect space to whip up your favorite meals. Head upstairs to discover a laundry room, full 4-piece bathroom, 2 large bedrooms, and a spacious master suite complete with a luxurious ensuite and its own private balcony, where you can enjoy your morning coffee. This home also comes with a generous 3k appliance allowance and full landscaping. Don't miss out! **UNDER CONSTRUCTION!** Photos may differ. First 4 photos are of the interior, rest are of the plan. Appliances NOT incl

Built in 2025

Essential Information

MLS® #	E4431989
Price	\$369,900



Bedrooms	3
Bathrooms	2.50
Full Baths	2
Half Baths	1
Square Footage	1,246
Acres	0.00
Year Built	2025
Type	Condo / Townhouse
Sub-Type	Townhouse
Style	3 Storey
Status	Active

Community Information

Address	22 16231 19 Avenue
Area	Edmonton
Subdivision	Glenridding Ravine
City	Edmonton
County	ALBERTA
Province	AB
Postal Code	T6W 5C6

Amenities

Amenities	Ceiling 9 ft., Detectors Smoke, Vinyl Windows, See Remarks
Parking	Double Garage Attached

Interior

Interior Features	ensuite bathroom
Appliances	Garage Control, Garage Opener, See Remarks
Heating	Forced Air-1, Natural Gas
Stories	3
Has Basement	Yes
Basement	None, No Basement

Exterior

Exterior	Wood, Stone, Vinyl
Exterior Features	Airport Nearby, Golf Nearby, Landscaped, Park/Reserve, Playground Nearby, Schools, Ski Hill Nearby
Roof	Asphalt Shingles
Construction	Wood, Stone, Vinyl

Foundation Concrete Perimeter

School Information

Elementary Joan Carr Catholic School
High Dr. Anne Anderson High

Additional Information

Date Listed April 19th, 2025
Days on Market 105
Zoning Zone 56
Condo Fee \$234

DATA IS DEEMED RELIABLE BUT IS NOT GUARANTEED ACCURATE BY THE REALTORS® ASSOCIATION OF EDMONTON. COPYRIGHT 2025 BY THE REALTORS® ASSOCIATION OF EDMONTON. ALL RIGHTS RESERVED.Trademarks are owned or controlled by the Canadian Real Estate Association (CREA) and identify real estate professionals who are members of CREA (REALTOR®, REALTORS®) and/or the quality of services they provide (MLS®, Multiple Listing Service®)
Listing information last updated on August 2nd, 2025 at 5:17am MDT