

## \$450,000 - 105 Brickyard Drive, Stony Plain

MLS® #E4428456

**\$450,000**

3 Bedroom, 2.50 Bathroom, 1,435 sqft

Single Family on 0.00 Acres

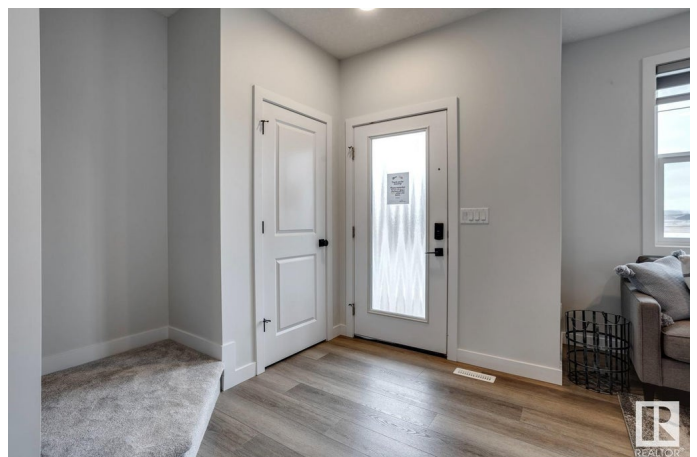
Brickyard, Stony Plain, AB

Welcome to this stunning new two-storey home located in the sought-after Brickyard community! This beautifully designed property features a deck, full landscaping, and a detached garage—the perfect start to your backyard retreat. The bright, open-concept main floor includes a spacious living room with a cozy electric fireplace, a sleek kitchen with stainless steel appliances, a breakfast bar, and plenty of storage. A mudroom at the back entrance, complete with a bench and cubbies, keeps things organized. A convenient 2pc bath rounds out the main level. Upstairs, you'll find 3 spacious bedrooms, a 4pc main bath, laundry area, and a primary suite with a 4pc ensuite and walk-in closet. Located close to schools and the new recreation center under construction, this home offers comfort, style, and a vibrant community lifestyle. Immediate possession is available—move in and start enjoying your new home today! \*Photos are representative\*

Built in 2025

### Essential Information

MLS® #	E4428456
Price	\$450,000
Bedrooms	3
Bathrooms	2.50



Full Baths	2
Half Baths	1
Square Footage	1,435
Acres	0.00
Year Built	2025
Type	Single Family
Sub-Type	Detached Single Family
Style	2 Storey
Status	Active

### Community Information

Address	105 Brickyard Drive
Area	Stony Plain
Subdivision	Brickyard
City	Stony Plain
County	ALBERTA
Province	AB
Postal Code	T7Z 1C3

### Amenities

Amenities	Ceiling 9 ft., Deck, No Animal Home, No Smoking Home
Parking	Double Garage Detached

### Interior

Interior Features	ensuite bathroom
Appliances	Dishwasher-Built-In, Microwave Hood Fan, Refrigerator, Stove-Electric
Heating	Forced Air-1, Natural Gas
Fireplace	Yes
Fireplaces	Insert
Stories	2
Has Basement	Yes
Basement	Full, Unfinished

### Exterior

Exterior	Wood, Vinyl
Exterior Features	Back Lane, Landscaped, Park/Reserve, Playground Nearby, Schools, Shopping Nearby
Roof	Asphalt Shingles
Construction	Wood, Vinyl

Foundation                      Concrete Perimeter

**Additional Information**

Date Listed                      April 1st, 2025

Days on Market                76

Zoning                            Zone 91

DATA IS DEEMED RELIABLE BUT IS NOT GUARANTEED ACCURATE BY THE REALTORS® ASSOCIATION OF EDMONTON. COPYRIGHT 2025 BY THE REALTORS® ASSOCIATION OF EDMONTON. ALL RIGHTS RESERVED.Trademarks are owned or controlled by the Canadian Real Estate Association (CREA) and identify real estate professionals who are members of CREA (REALTOR®, REALTORS®) and/or the quality of services they provide (MLS®, Multiple Listing Service®)

Listing information last updated on June 16th, 2025 at 4:02pm MDT