

## \$874,900 - 2102 11969 Jasper Avenue, Edmonton

MLS® #E4426635

**\$874,900**

3 Bedroom, 2.50 Bathroom, 1,523 sqft  
Condo / Townhouse on 0.00 Acres

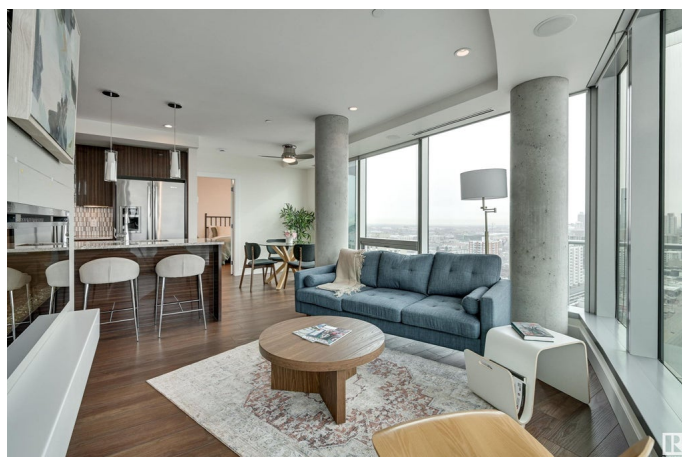
W&A hkw&ant&win, Edmonton, AB

Welcome to The Pearl, where urban comfort meets upscale living. This freshly painted 3 bedroom, 2.5 bathroom + den condo has amazing panoramic views of downtown Edmonton + the river valley thanks to your floor to ceiling windows. Your new, luxurious vinyl plank flooring grabs the attention of guests as they walk in. Your kitchen has high end stainless steel appliances + modern finishes. Unwind in your primary bedroom at the end of the day, looking out to the city at night time. Your walk-in closet has ample space for all of your clothing needs. Enjoy the privacy of your gorgeous 4-piece ensuite. Your den area features stunning glass walls, offering a bright space for an office. Your condo includes 2 titled underground heated parking spaces with attached storage. With 24-hour concierge, a car wash, 2 fitness centres, + a large social room, The Pearl has everything to offer residents. Enjoy life in the heart of Edmonton + being within walking distance to some of the city's best shopping + dining!

Built in 2015

### Essential Information

MLS® #	E4426635
Price	\$874,900



Bedrooms	3
Bathrooms	2.50
Full Baths	2
Half Baths	1
Square Footage	1,523
Acres	0.00
Year Built	2015
Type	Condo / Townhouse
Sub-Type	Apartment High Rise
Style	Single Level Apartment
Status	Active

### Community Information

Address	2102 11969 Jasper Avenue
Area	Edmonton
Subdivision	W&hkw&ant&win
City	Edmonton
County	ALBERTA
Province	AB
Postal Code	T5K 0P1

### Amenities

Amenities	Air Conditioner, Car Wash, Carbon Monoxide Detectors, Deck, Detectors Smoke, Exercise Room, Guest Suite, Hot Water Natural Gas, Intercom, No Smoking Home, Parking-Visitor, Party Room, Smart/Program. Thermostat, Secured Parking, Security Door, Social Rooms, Sprinkler System-Fire, Storage-In-Suite, Concierge Service, Storage Cage
Parking	Heated, Underground

### Interior

Interior Features	ensuite bathroom
Appliances	Air Conditioning-Central, Dishwasher-Built-In, Dryer, Hood Fan, Oven-Built-In, Oven-Microwave, Refrigerator, Stove-Countertop Electric, Washer, TV Wall Mount
Heating	Heat Pump, Natural Gas
# of Stories	36
Stories	1
Has Basement	Yes
Basement	None, No Basement

**Exterior**

Exterior	Concrete
Exterior Features	Back Lane, Paved Lane, Public Transportation, River Valley View, Schools, Shopping Nearby, View City, View Downtown, See Remarks
Roof	EPDM Membrane
Construction	Concrete
Foundation	Concrete Perimeter

**School Information**

Elementary	W&hkw&ant&win School
Middle	Westminster School
High	Victoria School

**Additional Information**

Date Listed	March 20th, 2025
Days on Market	42
Zoning	Zone 12
Condo Fee	\$1,327

DATA IS DEEMED RELIABLE BUT IS NOT GUARANTEED ACCURATE BY THE REALTORS® ASSOCIATION OF EDMONTON. COPYRIGHT 2025 BY THE REALTORS® ASSOCIATION OF EDMONTON. ALL RIGHTS RESERVED.Trademarks are owned or controlled by the Canadian Real Estate Association (CREA) and identify real estate professionals who are members of CREA (REALTOR®, REALTORS®) and/or the quality of services they provide (MLS®, Multiple Listing Service®)

Listing information last updated on May 1st, 2025 at 4:02pm MDT