

\$2,888,000 - 26020 Twp Rd 511 A, Rural Parkland County

MLS® #E4423836

\$2,888,000

4 Bedroom, 3.50 Bathroom, 3,230 sqft

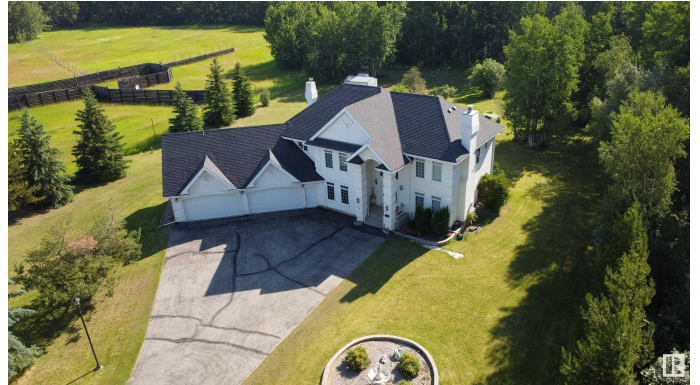
Rural on 48.22 Acres

White Tail Acres, Rural Parkland County, AB

An Exclusive Retreat with Limitless Potential! 48.22 Acres just Minutes from Edmonton. A curved, treelined driveway leads to an elegant custom-built 2-storey home featuring 4 bedrooms, 4 bathrooms, and high-end finishes. The gourmet kitchen with granite countertops flows seamlessly to the formal dining room and grand living room. Relax on the low-maintenance deck or retreat to the serene primary suite. The estate includes an attached 5-car heated garage, a 25'x40' pole barn, and extensive fencing - over \$250,000 invested - ideal for an equestrian center or private venture. Subdivision potential offers future development opportunities making this a smart investment in a prime and growing location. For an unmatched lifestyle, unwind after a busy day with a round of golf just around the corner at the Edmonton Petroleum Golf & Country Club or the Blackhawk Golf Club. Whether seeking a prestigious private residence or future development, this meticulously crafted property is ready to exceed expectations.

Built in 1999

Essential Information



MLS® #	E4423836
Price	\$2,888,000
Bedrooms	4
Bathrooms	3.50
Full Baths	3
Half Baths	1
Square Footage	3,230
Acres	48.22
Year Built	1999
Type	Rural
Sub-Type	Detached Single Family
Style	2 Storey
Status	Active

Community Information

Address	26020 Twp Rd 511 A
Area	Rural Parkland County
Subdivision	White Tail Acres
City	Rural Parkland County
County	ALBERTA
Province	AB
Postal Code	T7Y 1B2

Amenities

Features	Closet Organizers, Deck, Fire Pit, Gazebo, No Animal Home, No Smoking Home, Parking-Extra, R.V. Storage, Wet Bar, Natural Gas BBQ Hookup
----------	--

Interior

Interior Features	ensuite bathroom
Heating	Forced Air-2, Natural Gas
Fireplace	Yes
Stories	3
Has Basement	Yes
Basement	Full, Finished

Exterior

Exterior	Wood
Exterior Features	Airport Nearby, Cross Fenced, Golf Nearby, Landscaped, Subdividable

	Lot, Partially Fenced
Construction	Wood
Foundation	Concrete Perimeter

Additional Information

Date Listed	March 4th, 2025
Days on Market	58
Zoning	Zone 90

DATA IS DEEMED RELIABLE BUT IS NOT GUARANTEED ACCURATE BY THE REALTORS® ASSOCIATION OF EDMONTON. COPYRIGHT 2025 BY THE REALTORS® ASSOCIATION OF EDMONTON. ALL RIGHTS RESERVED. Trademarks are owned or controlled by the Canadian Real Estate Association (CREA) and identify real estate professionals who are members of CREA (REALTOR®, REALTORS®) and/or the quality of services they provide (MLS®, Multiple Listing Service®)

Listing information last updated on May 1st, 2025 at 2:47pm MDT