

# **\$384,900 - Highway 28 Twp Rd 611, Rural Bonnyville M.D.**

MLS® #E4415192

**\$384,900**

0 Bedroom, 0.00 Bathroom,  
Rural on 7.02 Acres

None, Rural Bonnyville M.D., AB

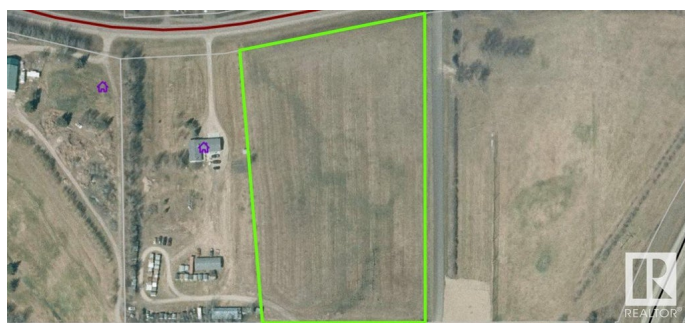
Tee off on this potential! 7 acres of prime development property, bordering the Bonnyville Golf and Country Club, with spectacular views of Moose Lake and walking distance to the shoreline, beaches, and playground. Only a 5 minute drive to the town of Bonnyville, and easy access to Highway 28. Whether you're planning a large condo project, a small community, a townhome complex, or just a private acreage- swing for the green and the possibilities are endless!

## **Essential Information**

MLS® #	E4415192
Price	\$384,900
Bathrooms	0.00
Acres	7.02
Type	Rural
Sub-Type	Vacant Lot/Land
Status	Active

## **Community Information**

Address	Highway 28 Twp Rd 611
Area	Rural Bonnyville M.D.
Subdivision	None
City	Rural Bonnyville M.D.



County	ALBERTA
Province	AB
Postal Code	T9N 2G9

**Exterior**

Exterior Features    Golf Nearby, Lake View

**Additional Information**

Date Listed	December 3rd, 2024
Days on Market	243
Zoning	Zone 60

DATA IS DEEMED RELIABLE BUT IS NOT GUARANTEED ACCURATE BY THE REALTORS® ASSOCIATION OF EDMONTON. COPYRIGHT 2025 BY THE REALTORS® ASSOCIATION OF EDMONTON. ALL RIGHTS RESERVED.Trademarks are owned or controlled by the Canadian Real Estate Association (CREA) and identify real estate professionals who are members of CREA (REALTOR®, REALTORS®) and/or the quality of services they provide (MLS®, Multiple Listing Service®)

Listing information last updated on August 3rd, 2025 at 3:47pm MDT