

## \$175,000 - 1342 8882 170 Street, Edmonton

MLS® #E4414649

**\$175,000**

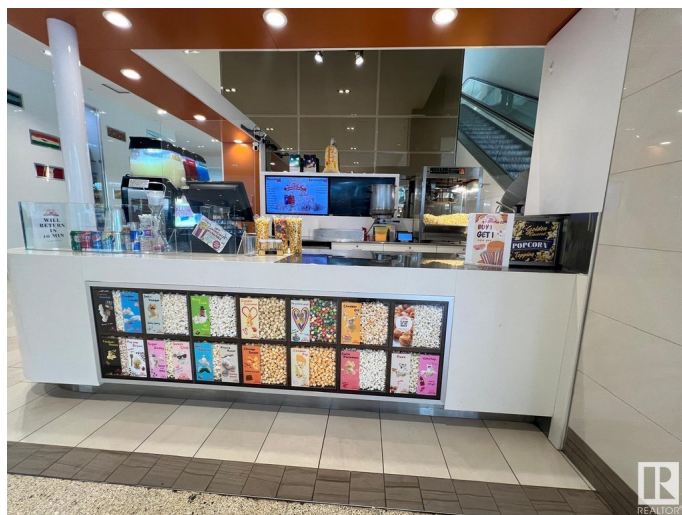
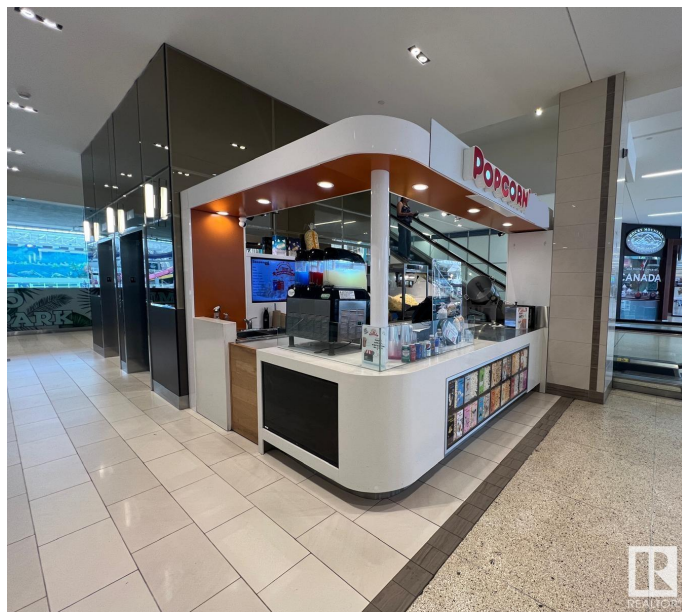
0 Bedroom, 0.00 Bathroom,  
Business on 0.00 Acres

Summerlea, Edmonton, AB

Own a thriving business in one of North America's most visited shopping destinations! Located at the entrance to the Waterpark & across Sea Lion Show, this Popcorn Store benefits from high foot traffic and exposure to shoppers, tourists, and families. With a loyal customer base, the store offers fresh, gourmet popcorn in a variety of flavors, making it a popular snack spot. The business is a turnkey operation, fully equipped with popcorn machines, display units, Slush machine, inventory and trained staff. It offers high-profit potential with opportunities for growth through online sales, events, and seasonal promotions. The flexible business model allows you to maintain the current concept, introduce new flavors, and create promotions. This is a rare opportunity to own a business in West Edmonton Mall, with great hours, low overhead and strong growth potential. Whether you're an experienced business owner or a new entrepreneur, this profitable popcorn business is a great investment!

### Essential Information

|           |           |
|-----------|-----------|
| MLS® #    | E4414649  |
| Price     | \$175,000 |
| Bathrooms | 0.00      |



|        |          |
|--------|----------|
| Acres  | 0.00     |
| Type   | Business |
| Status | Active   |

### Community Information

|             |                      |
|-------------|----------------------|
| Address     | 1342 8882 170 Street |
| Area        | Edmonton             |
| Subdivision | Summerlea            |
| City        | Edmonton             |
| County      | ALBERTA              |
| Province    | AB                   |
| Postal Code | T5T 4J2              |

### Additional Information

|                |                     |
|----------------|---------------------|
| Date Listed    | November 26th, 2024 |
| Days on Market | 156                 |
| Zoning         | Zone 20             |

DATA IS DEEMED RELIABLE BUT IS NOT GUARANTEED ACCURATE BY THE REALTORS® ASSOCIATION OF EDMONTON. COPYRIGHT 2025 BY THE REALTORS® ASSOCIATION OF EDMONTON. ALL RIGHTS RESERVED. Trademarks are owned or controlled by the Canadian Real Estate Association (CREA) and identify real estate professionals who are members of CREA (REALTOR®, REALTORS®) and/or the quality of services they provide (MLS®, Multiple Listing Service®)

Listing information last updated on May 1st, 2025 at 10:03am MDT