

\$39,900 - 105 58532 Range Road 113, Rural St. Paul County

MLS® #E4414610

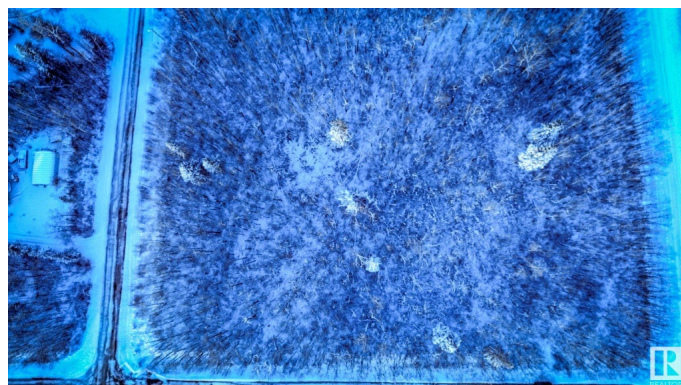
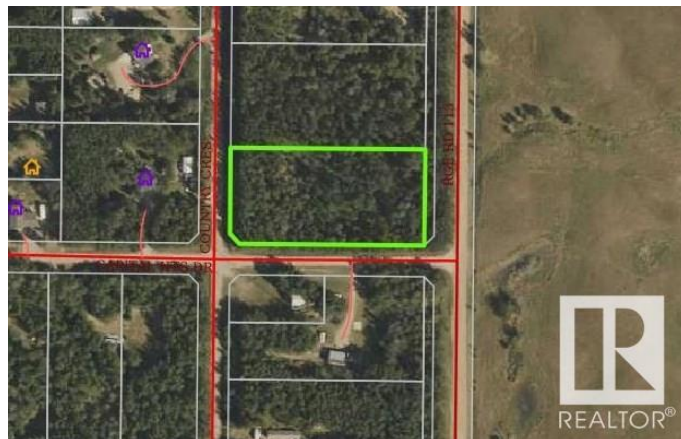
\$39,900

0 Bedroom, 0.00 Bathroom,
Rural on 1.90 Acres

Lottie Lake Estate, Rural St. Paul County, AB

Discover Your Slice of Paradise at Lottie Lake!

Nestled on 1.90 acres of serene, treed land, this property offers the perfect balance of privacy and natural beauty. Enjoy peaceful views of rolling hills across the field while being surrounded by the tranquility of nature. Located just 20 minutes from St. Paul and 2 hours east of Edmonton, this property is a rare find for those seeking a private escape without sacrificing convenience. With municipal water, power, and gas available at the property line, it's primed and ready for your dream home, cabin, RV or weekend getaway. Whether you're looking to build, invest, or simply enjoy a serene retreat, this is your opportunity to create something truly special. Don't miss this chance to own a piece of the quiet countryside at Lottie Lake—where relaxation meets possibility!



Essential Information

MLS® #	E4414610
Price	\$39,900
Bathrooms	0.00
Acres	1.90
Type	Rural
Sub-Type	Vacant Lot/Land

Status Active

Community Information

Address 105 58532 Range Road 113
Area Rural St. Paul County
Subdivision Lottie Lake Estate
City Rural St. Paul County
County ALBERTA
Province AB
Postal Code T0A 3A0

Exterior

Exterior Features Backs Onto Park/Trees, Boating, Flat Site, Recreation Use, Treed Lot

Additional Information

Date Listed November 25th, 2024
Days on Market 162
Zoning Zone 60

DATA IS DEEMED RELIABLE BUT IS NOT GUARANTEED ACCURATE BY THE REALTORS® ASSOCIATION OF EDMONTON. COPYRIGHT 2025 BY THE REALTORS® ASSOCIATION OF EDMONTON. ALL RIGHTS RESERVED.Trademarks are owned or controlled by the Canadian Real Estate Association (CREA) and identify real estate professionals who are members of CREA (REALTOR®, REALTORS®) and/or the quality of services they provide (MLS®, Multiple Listing Service®)
Listing information last updated on May 6th, 2025 at 1:47am MDT