

\$459,900 - 61422 Rr 205, Rural Thorhild County

MLS® #E4413730

\$459,900

2 Bedroom, 1.00 Bathroom, 896 sqft

Rural on 160.00 Acres

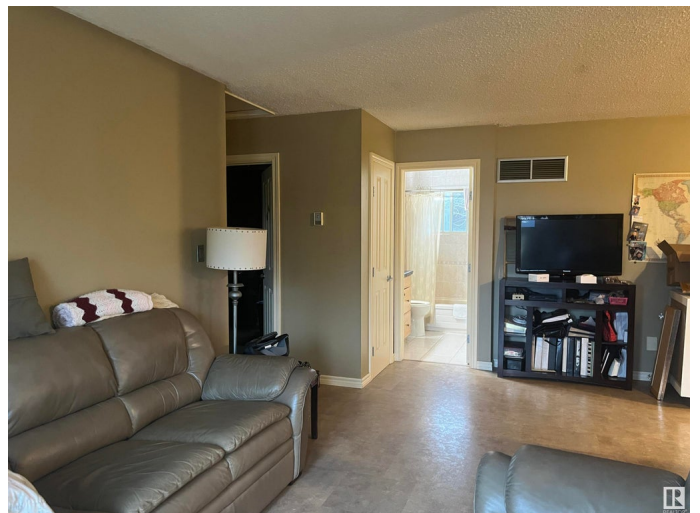
None, Rural Thorhild County, AB

Enjoy privacy on this 160 acres at the end of a dead end road just a few minutes south of Newbrook. This cute 896 sq ft 2 bedroom 1 bathroom home was built in 1983 with 2"x6" walls and has been well kept. Upgrades over the years include flooring, kitchen cabinets, windows, ss appliances (stove and dishwasher new this year) shingles and bathroom renovations. Open living/kitchen concept, bay window and garden doors to a large covered deck add to this great home. There is a 32'x24' detached garage with addition on the back for more storage. Beautiful setting amongst large mature trees. The pasture land is all fenced and has dugouts for water and has been rented out for cattle pasture the last few years. Perfect property for someone wanting a little privacy with lots of land for hunting or farming. Just about an hour to Edmonton.

Built in 1983

Essential Information

| | |
|----------------|-----------|
| MLS® # | E4413730 |
| Price | \$459,900 |
| Bedrooms | 2 |
| Bathrooms | 1.00 |
| Full Baths | 1 |
| Square Footage | 896 |
| Acres | 160.00 |



| | |
|------------|------------------------|
| Year Built | 1983 |
| Type | Rural |
| Sub-Type | Detached Single Family |
| Style | Bungalow |
| Status | Active |

Community Information

| | |
|-------------|-----------------------|
| Address | 61422 Rr 205 |
| Area | Rural Thorhild County |
| Subdivision | None |
| City | Rural Thorhild County |
| County | ALBERTA |
| Province | AB |
| Postal Code | T0A 2P0 |

Amenities

| | |
|----------|---------------------------------------|
| Features | Deck, Exterior Walls- 2"x6", Fire Pit |
|----------|---------------------------------------|

Interior

| | |
|--------------|-----------------------|
| Heating | Forced Air-1, Propane |
| Stories | 1 |
| Has Basement | Yes |
| Basement | None, No Basement |

Exterior

| | |
|-------------------|---|
| Exterior | Wood |
| Exterior Features | Fenced, Fruit Trees/Shrubs, Landscaped, Private Setting, Subdividable Lot |
| Construction | Wood |
| Foundation | Piling |

Additional Information

| | |
|----------------|---------------------|
| Date Listed | November 14th, 2024 |
| Days on Market | 169 |
| Zoning | Zone 60 |

DATA IS DEEMED RELIABLE BUT IS NOT GUARANTEED ACCURATE BY THE REALTORS® ASSOCIATION OF EDMONTON. COPYRIGHT 2025 BY THE REALTORS® ASSOCIATION OF EDMONTON. ALL RIGHTS RESERVED. Trademarks are owned or controlled by the Canadian Real Estate Association (CREA) and identify real estate professionals who are members of CREA (REALTOR®, REALTORS®) and/or the quality of services they provide (MLS®, Multiple Listing Service®)

Listing information last updated on May 2nd, 2025 at 1:32am MDT