

# \$0 - 1101 16 Avenue, Nisku

MLS® #E4413632

**\$0**

0 Bedroom, 0.00 Bathroom,  
Industrial on 0.00 Acres

Nisku, Nisku, AB

- 16,802 sq.ft.± office/warehouse available for lease on 1.2 acres± - Two 10 ton bridge cranes - Improved and fenced yard - 18â€™™x18â€™™ grade loading bays with make up air and sumps - Easy access to high load corridor, Highway 625, and QEII Highway

Built in 2010

## Essential Information

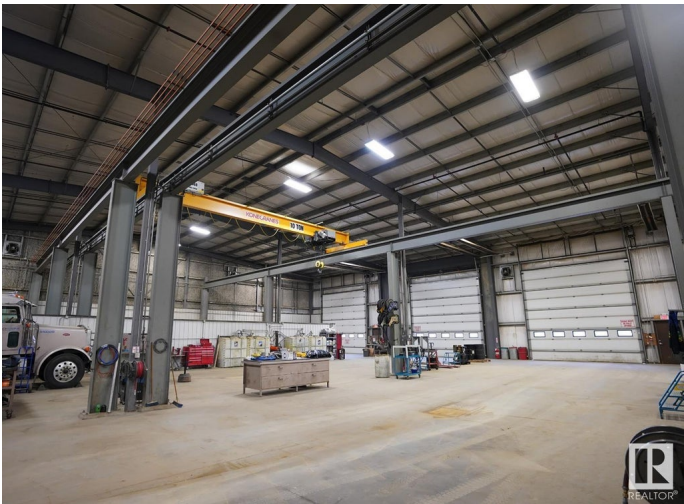
|            |            |
|------------|------------|
| MLS® #     | E4413632   |
| Bathrooms  | 0.00       |
| Acres      | 0.00       |
| Year Built | 2010       |
| Type       | Industrial |
| Status     | Active     |

## Community Information

|             |                |
|-------------|----------------|
| Address     | 1101 16 Avenue |
| Area        | Nisku          |
| Subdivision | Nisku          |
| City        | Nisku          |
| County      | ALBERTA        |
| Province    | AB             |
| Postal Code | T9E 0A8        |

## Exterior

|          |                 |
|----------|-----------------|
| Exterior | Concrete, Mixed |
|----------|-----------------|



TOTAL: 32,636 SF±

Construction            Concrete, Mixed

**Additional Information**

Date Listed            November 14th, 2024

Days on Market       262

Zoning                 Zone 81

DATA IS DEEMED RELIABLE BUT IS NOT GUARANTEED ACCURATE BY THE REALTORS® ASSOCIATION OF EDMONTON. COPYRIGHT 2025 BY THE REALTORS® ASSOCIATION OF EDMONTON. ALL RIGHTS RESERVED.Trademarks are owned or controlled by the Canadian Real Estate Association (CREA) and identify real estate professionals who are members of CREA (REALTOR®, REALTORS®) and/or the quality of services they provide (MLS®, Multiple Listing Service®)

Listing information last updated on August 2nd, 2025 at 11:02pm MDT