

## \$149,900 - 4-23-63-17 Se, Rural Athabasca County

MLS® #E4409639

**\$149,900**

0 Bedroom, 0.00 Bathroom,  
Rural on 24.40 Acres

None, Rural Athabasca County, AB

Discover serenity on this expansive 24.4-acre treed lot, just 5km south of Perryvale along Highway 2.

### Essential Information

MLS® #	E4409639
Price	\$149,900
Bathrooms	0.00
Acres	24.40
Type	Rural
Sub-Type	Vacant Lot/Land
Status	Active

### Community Information

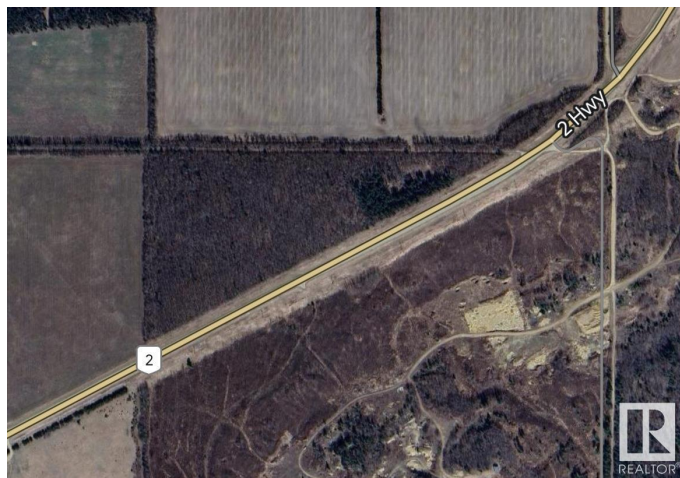
Address	4-23-63-17 Se
Area	Rural Athabasca County
Subdivision	None
City	Rural Athabasca County
County	ALBERTA
Province	AB
Postal Code	T0A 0M0

### Exterior

Exterior Features Not Fenced, Treed Lot

### Additional Information

Date Listed October 9th, 2024



Days on Market 205

Zoning Zone 60

DATA IS DEEMED RELIABLE BUT IS NOT GUARANTEED ACCURATE BY THE REALTORS® ASSOCIATION OF EDMONTON. COPYRIGHT 2025 BY THE REALTORS® ASSOCIATION OF EDMONTON. ALL RIGHTS RESERVED. Trademarks are owned or controlled by the Canadian Real Estate Association (CREA) and identify real estate professionals who are members of CREA (REALTOR®, REALTORS®) and/or the quality of services they provide (MLS®, Multiple Listing Service®)

Listing information last updated on May 2nd, 2025 at 1:17pm MDT