

\$155,000 - 4845 115 Avenue Nw Nw, Edmonton

MLS® #E4352586

\$155,000

0 Bedroom, 0.00 Bathroom,
Single Family on 0.07 Acres

Beverly Heights, Edmonton, AB

Vacant 25' x 120' Lot, READY TO BUILD!!
South facing backyard. Across from Ada Blvd
and steps to Gorgeous River Valley. Build on
an affordable lot and enjoy the incredible
amenities around! Developer can build or bring
your own contractor.

Essential Information

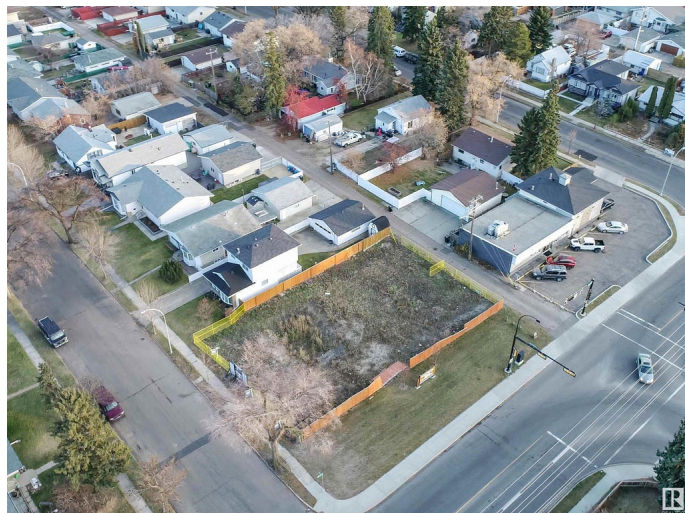
MLS® #	E4352586
Price	\$155,000
Bathrooms	0.00
Acres	0.07
Type	Single Family
Sub-Type	Vacant Lot/Land

Community Information

Address	4845 115 Avenue Nw Nw
Area	Edmonton
Subdivision	Beverly Heights
City	Edmonton
County	ALBERTA
Province	AB
Postal Code	T5W 0W3

Exterior

Exterior Features	Back Lane, Golf Nearby, Playground Nearby, Private Setting, Public Transportation, Schools, Shopping Nearby
-------------------	---



Additional Information

Date Listed August 2nd, 2023

DATA IS DEEMED RELIABLE BUT IS NOT GUARANTEED ACCURATE BY THE REALTORS® ASSOCIATION OF EDMONTON. COPYRIGHT 2024 BY THE REALTORS® ASSOCIATION OF EDMONTON. ALL RIGHTS RESERVED.Trademarks are owned or controlled by the Canadian Real Estate Association (CREA) and identify real estate professionals who are members of CREA (REALTOR®, REALTORS®) and/or the quality of services they provide (MLS®, Multiple Listing Service®)

Listing information last updated on May 19th, 2024 at 4:01pm MDT