

\$0 - 104 Charlesworth Dr Sw Sw, Edmonton

MLS® #E4281845

\$0

Bedroom, Bathroom, 22 sqft

Retail on 0.00 Acres

Charlesworth, Edmonton, AB

Multiple commercial Retail Units are available for pre-leasing in this rapidly developing community of Charlesworth in fast growing SW corridor of the city. The community is expanding quickly with proposed high density buildings in the surrounding of this development. This high quality development should be up for possession in Spring/Summer of 2023. We are leasing these units from \$ 32.00 PSF and, the DRIVE THRU UNITS at 35.00 PSF. A variety of businesses including: Food and Beverage Services, Personal Services, Financial and Insurance, Health Services/Medical usages (General Physician, Pharmacy, Chiro, Massage etc.), Day Care and, Out of School care, Dine in restaurant are a good fit to serve this local community. We have units available with Patio.

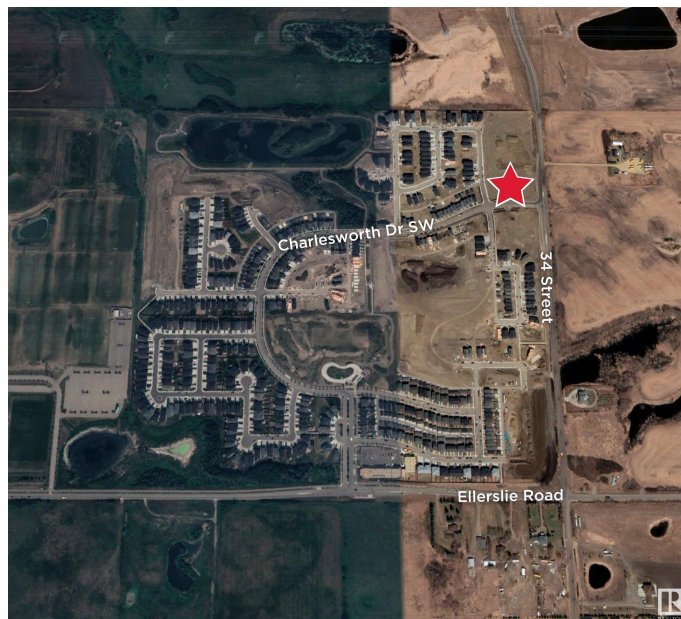
Built in 2022

Essential Information

MLS® #	E4281845
Square Footage	22
Acres	0.00
Year Built	2022
Type	Retail

Community Information

Address 104 Charlesworth Dr Sw Sw



Area	Edmonton
Subdivision	Charlesworth
City	Edmonton
Province	AB
Postal Code	T6X 1A5

Exterior

Construction	Concrete, Steel Frame
--------------	-----------------------

Additional Information

Date Listed	March 15th, 2022
-------------	------------------

DATA IS DEEMED RELIABLE BUT IS NOT GUARANTEED ACCURATE BY THE REALTORS® ASSOCIATION OF EDMONTON. COPYRIGHT 2024 BY THE REALTORS® ASSOCIATION OF EDMONTON. ALL RIGHTS RESERVED. Trademarks are owned or controlled by the Canadian Real Estate Association (CREA) and identify real estate professionals who are members of CREA (REALTOR®, REALTORS®) and/or the quality of services they provide (MLS®, Multiple Listing Service®)

Listing information last updated on May 21st, 2024 at 11:47am MDT